

V SERIES



V-55 SPORT YACHT

V-55 SY



CRUISE CONTROL

Fast and fun with premium accommodations and Viking quality, the V-55 Sport Yacht shines as the latest example of our commitment to building a better boat every day.

Valhalla Boatworks is proud to announce the V-55 Sport Yacht (SY) – an evolution within the V Series that emphasizes comfort, style and accommodations in a high-performance luxury cruising yacht.

“The V-55 Sport Yacht represents our ability to diversify within a model to meet the needs of more owners,” says Viking President and CEO Pat Healey. “It takes the proven performance of our V-55 center console hull and merges it with an exciting, contemporary design that the cruising crowd will love.”

Powered by four Mercury 600-hp outboards, the V-55 SY runs on the same Michael Peters Yacht Design Stepped-V Ventilated Tunnel (SVVT) running surface – delivering a fast, stable and efficient ride.

Boarding platforms outboard of the engines lead to a pair of glass doors that provide cockpit access. Designed for maximum relaxation and outdoor entertaining, the yacht is offered with several different aft deck layouts.

Hull No. 1 will be appointed with a wraparound lounge and table in the cockpit, paired with an L-shaped summer kitchen along the aft pilothouse bulkhead (which also includes a port-side door).

A summer kitchen with a full-width counter that extends along a solid aft bulkhead is also available with the U-shaped cockpit dinette. The third option boasts an aft dinette with table and facing bench seats, coupled with a bar and three stools, in lieu of the L-shaped summer kitchen.

With each configuration, the aft bulkhead has an integrated powered window that opens the pilothouse to the aft deck. Adding to the entertainment is an optional HD TV that drops down from the hardtop underside for aft-deck viewing.

WIDE OPEN

The cockpit comes standard with powered fold-down balconies on each side with integrated boarding ladders. “The balconies consist of the entire aft sections of the hull sides, completely opening up the cockpit,” says Viking Design Manager David Wilson. “Each platform is 25 square feet, giving you increased deck space and easy water access.”

An asymmetrical side-deck design allows for increased interior volume. A raised starboard side deck (accessed via three steps) frees up space in the cabin while still providing access forward to tend to dock lines. The port side walkway is flush with the deck and leads to the bow, where you’ll find a three-person sunpad and a wraparound lounge with table. A low-profile bow rail enhances safety and adds style.

The Valhalla 55 Sport Yacht presents a stunning profile. Her swept-back, four-sided fiberglass pilothouse features tinted windows and a hardtop that extends aft to cover the summer kitchen or bar. A telescoping powered shade – hidden in the hardtop – delivers sun protection and comfort in the cockpit. Support arches gracefully project outboard to the coamings.

PRELIMINARY

V-55 SY



INSIDE OUT

The pilothouse is designed to bring the outdoors inside. In addition to the bulkhead window, it features a powered sunroof and port and starboard powered doors that slide aft. They provide full-beam access from the three-person forward control station while also ushering in refreshing breezes. Like our Viking and Valhalla helms, the V-55 SY's control station is streamlined, clean and ergonomically friendly. Three multifunctional displays anchor the raised electronics pod in an impressive all-glass helm design. Visibility through the one-piece windshield is superb.

With the solid aft bulkhead option, the pilothouse's interior is appointed with a full-width raised lounge and table. Alternatively, you have a raised bench seat offset to starboard when the L-shaped summer kitchen with bulkhead door is chosen; and the outdoor bar design boasts a continuation of its counter into the pilothouse.

Port-side companionway stairs lead to the feature-packed galley to starboard and comfortable dinette to port (with L-shaped seating that's convertible to a berth). Standard

accommodations include two private staterooms with queen beds. The forward master is appointed with an ensuite head and separate shower. A guest head, also with separate shower, is just forward of the amidship guest stateroom. For extra sleeping accommodations, an optional amidship layout with two berths – a double to starboard and a single to port – is available.

The V-55 Sport holds 1,100 gallons of fuel for extensive range and is engineered for a Seakeeper for increased comfort. Our new Valhalla yacht is scheduled to make its debut in late spring.

Valhalla Boatworks is a subsidiary of the Viking Yacht Company. Announced in early 2019, the Valhalla V Series lineup now includes eight premium outboard-powered yachts from 28 to 55 feet built with the same quality, attention to detail and high-level engineering as Viking Yachts. The announcement of the V-55 SY comes on the heels of the introduction of two inshore Valhalla center consoles – the V-28 Bay and V-29 Hybrid.





valkalla





V-55 SY



Stern View - Bar



Plan View - Bar with Rear Door

V-55 SY



PRELIMINARY



Stern View - Full Aft Galley

V-55 SY



Stern View - Three-Quarter Galley



Plan View - Full Aft Galley

V-55 SY



PRELIMINARY



Plan View - Three-Quarter Galley with Rear Door

V-55 SY



PRELIMINARY



Stern Quarter

V-55 SY



PRELIMINARY

Stern Quarter with SureShade

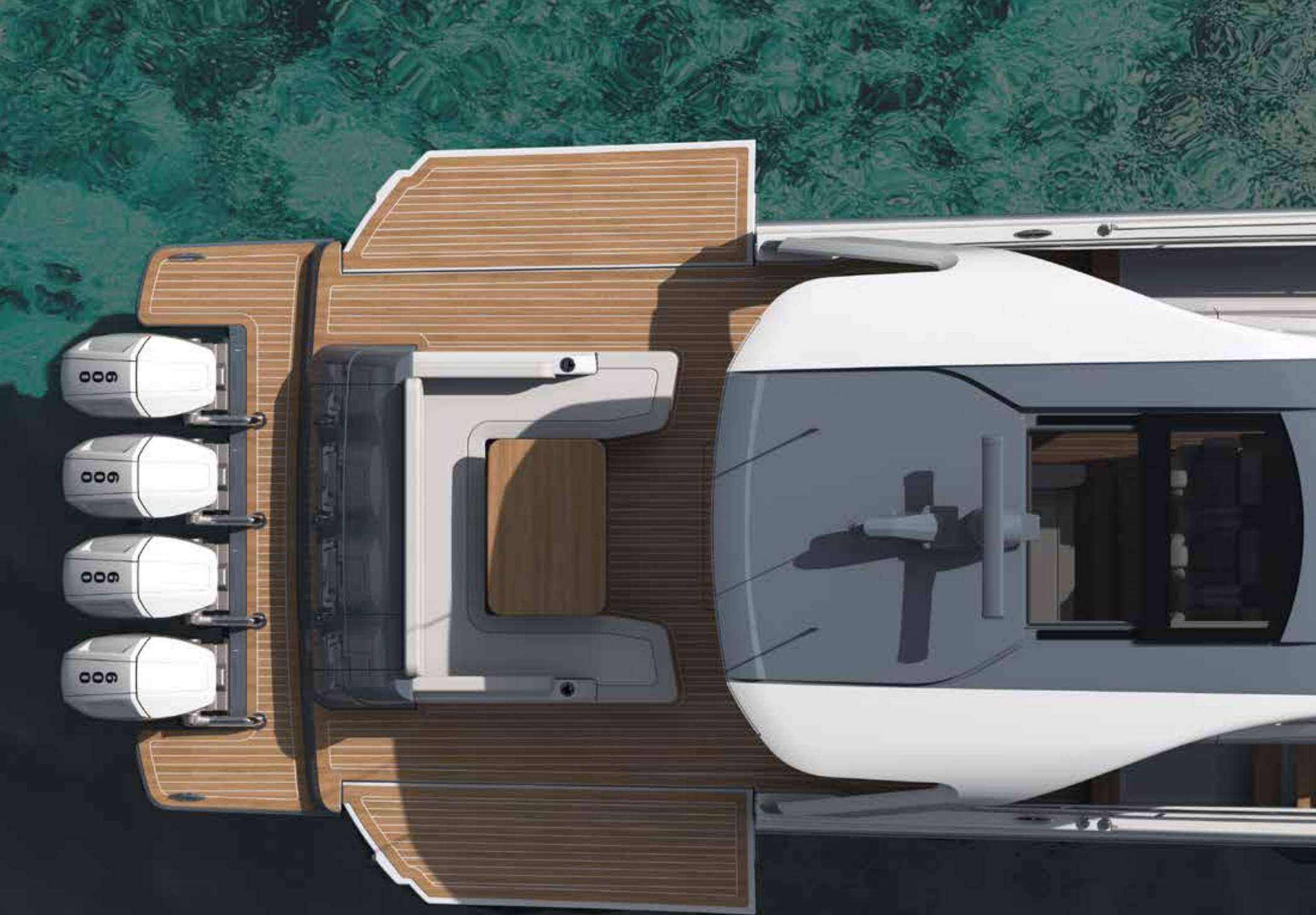


Balconies Up

V-55 SY



PRELIMINARY



Balconies Down

V-55 SY



PRELIMINARY



Plan View - Bench Seat

V-55 SY



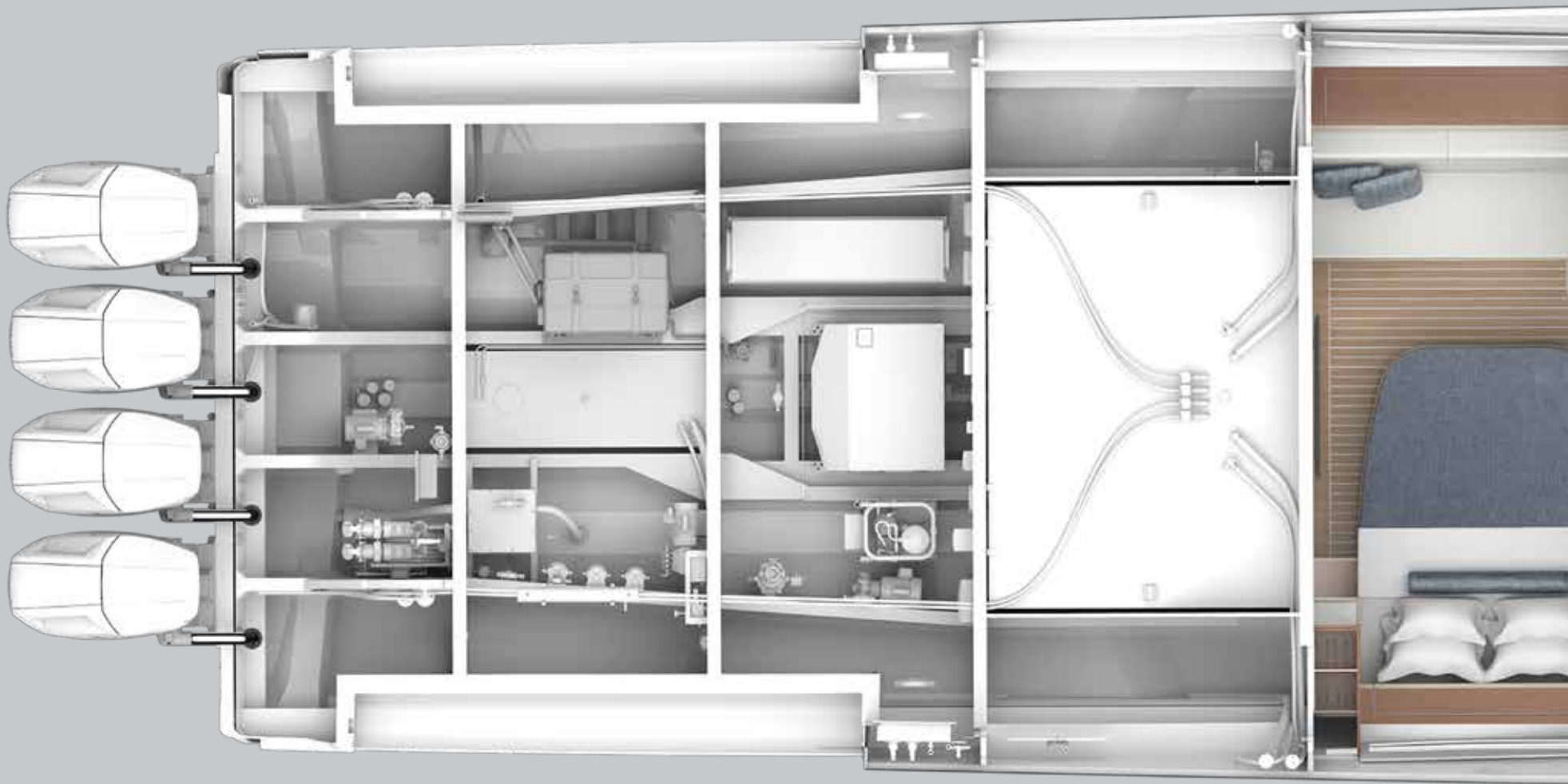
PRELIMINARY



PRELIMINARY



PRELIMINARY

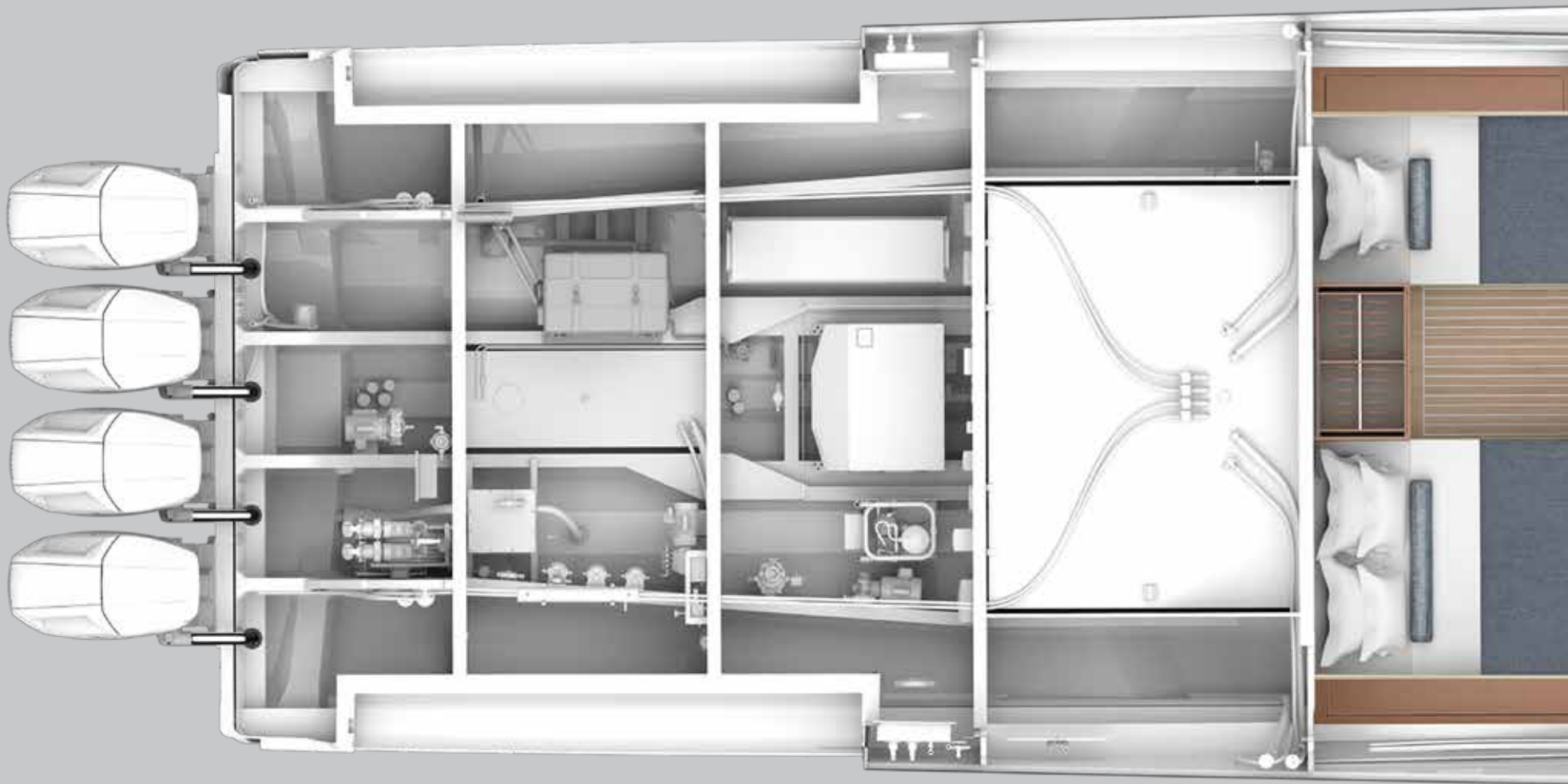


Lower Accommodations - Standard Layout

V-55 SY



PRELIMINARY



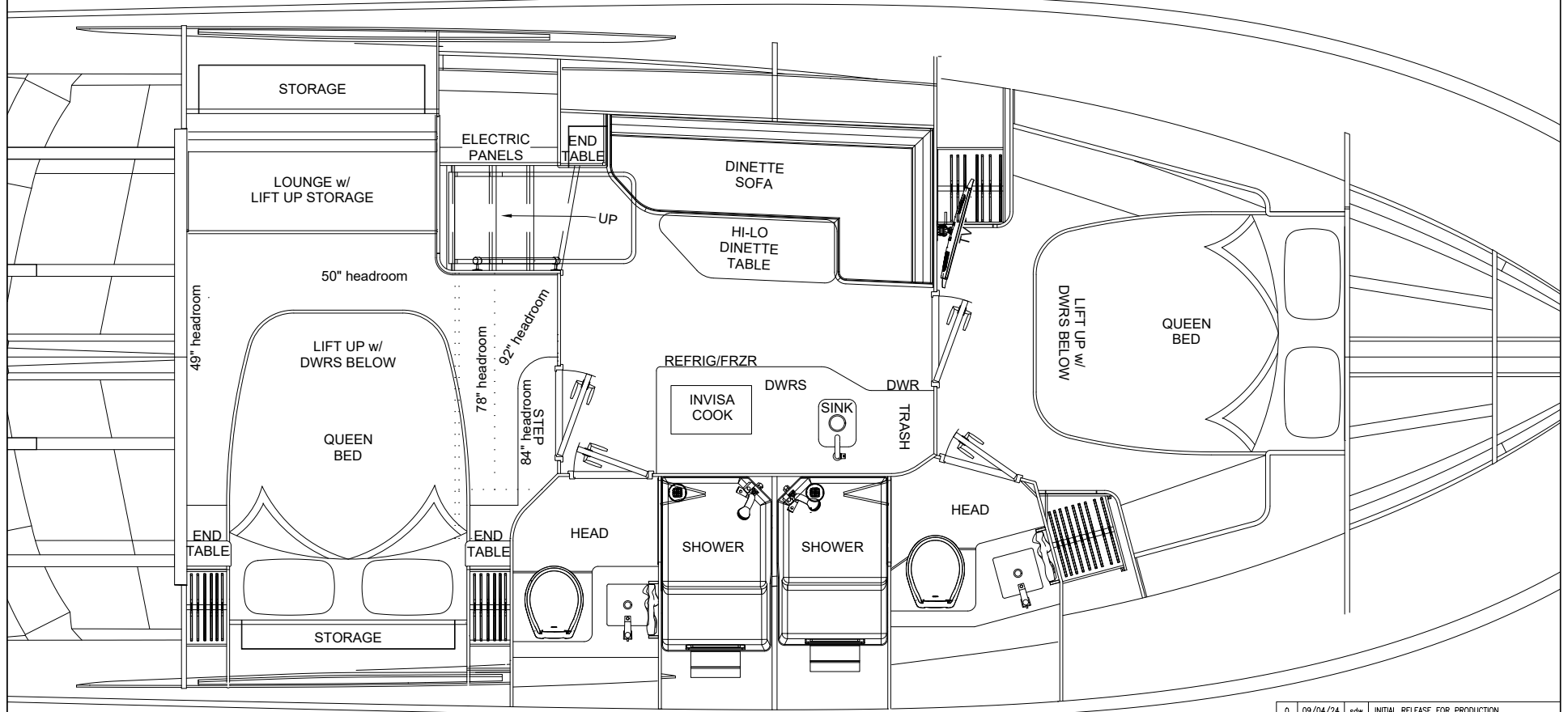
Lower Accommodations - Optional Layout

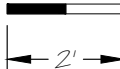
V-55 SY



PRELIMINARY

Valhalla V-55 SY



SCALE 

0	09/04/24	sdw	INITIAL RELEASE FOR PRODUCTION
REV	DATE	BY	REVISION
viking — YACHT COMPANY — NEW GRETN, NEW JERSEY			
TITLE INTERIOR LAYOUT ACCOM PLANS - V-55 SY			AS ON V-55 SY
SCALE as noted	DWG No.	sdw	CKD
DATE 06/18/24	DWG No. Page 1 of 2	MV0314	REV 0

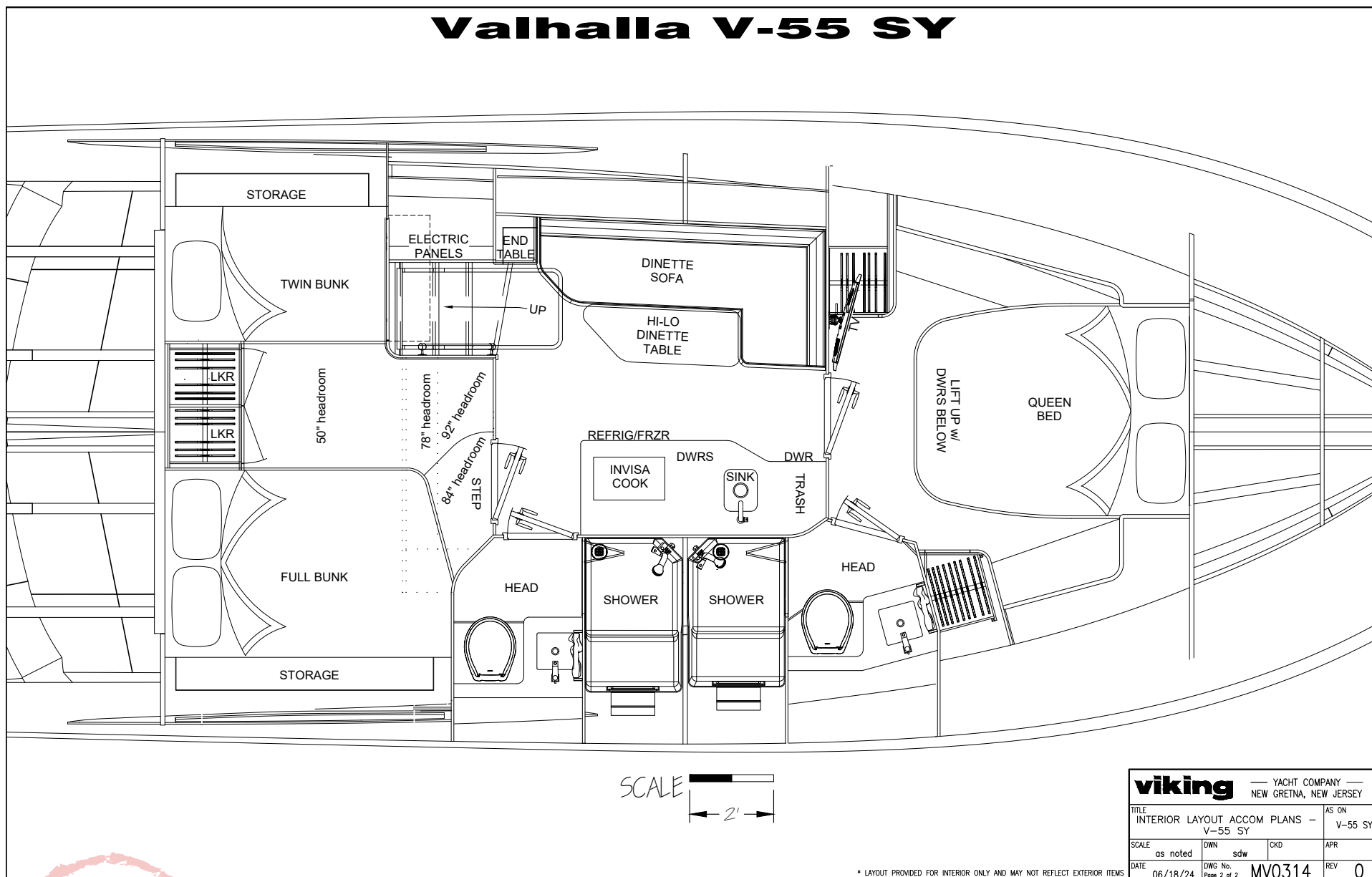
* LAYOUT PROVIDED FOR INTERIOR ONLY AND MAY NOT REFLECT EXTERIOR ITEMS

Detailed Accommodation Plan - Standard Layout

PRELIMINARY

V-55 SY

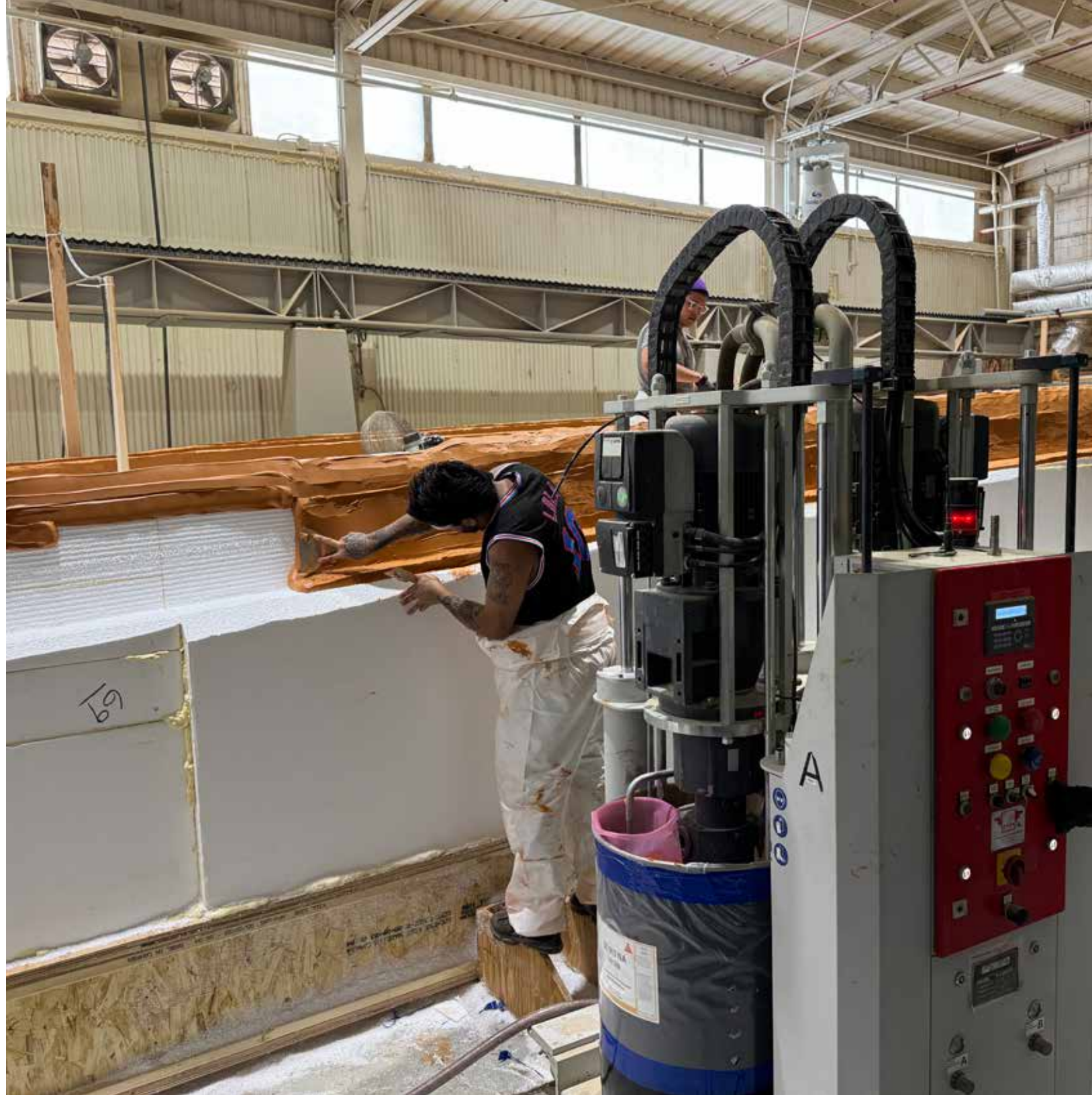
Valhalla V-55 SY



Detailed Accommodation Plan - Optional Layout

PRELIMINARY





















V-55 SY

Construction

- Blister resistant modified vinylester resin in entire boat
- Fresh water tank, polyethylene
- Fuel tank (1), for main engines, 3/16" 5052 H32 aluminum
- Fuel tank (1), for diesel generator, 3/16" 5052 H32 aluminum
- High performance isophthalic gelcoat NPG superior gloss flexibility and outstanding weathering characteristics
- Holding tank, polyethylene
- Hull Hand laminated with closed cell PVC foam core to optimize strength and stiffness
- Hull gelcoat Snow White
- Lower guard rail to match hull color, painted with stainless steel insert
- Molded fiberglass cockpit deck
- Nonskid for traction and durability
- Patented Michael Peters Stepped V Ventilated Tunnel running surface designed to reduce drag

- while increasing speed, stability and efficiency
- Rub rail, painted white with stainless steel insert
- Stainless steel side through hulls above water line
- Stringers, infused fiberglass over foam core for reduced weight and increased stiffness
- Titanium though hulls with Composite Seacocks for all below water line penetrations.
- 316 stainless steel hardware throughout

Mechanical

- Aft bilge pumps (2), connected to float switches for automatic operation and manual operation through on-dash switches
- Aqua air conditioning, lower accommodations and pilot house
- Auto sump box for showers and galley drains, located in forward bilge
- D/C pressurized freshwater system with freshwater fill on console
- Deck pump-out fitting for

- holding tank
- Diesel Generator 15kW
- Dockside freshwater connection
- Hooker Sea Chest with high and low speed pickups to seawater consumers
- Electric horns, located on radar mast
- Electric power assist steering per engine manufacturer
- Electric toilets with overboard and holding tank discharge
- High water alarm
- Macerator pump for holding tank overhead discharge
- Mid-bilge pump with float switches for automatic operation and manual operation through on-dash switches
- PEX, freshwater system plumbing
- Water heater quick recovery, electric (11 gal)
- Zipwake trim control system

Electrical

- Anchor light/navigation lights

- Battery chargers, (2) 60 amp
- Batteries, Odyssey Group 31. One (1) per engine and (3) additional house batteries
- Battery distribution panel with activated battery switches and voltage sensitive parallels
- Battery voltage monitor
- Bocatech 12V switching with backlit switch labeling
- Glendinning cable reel (CRM-50), (1) with 3 wire grounded cord, (1) additional 50 amp 220V inlet with 50' cord
- Color-coded, labeled and numbered wiring system
- LED interior console lighting and spectrum under gunwale and overhead lights with POCO lighting control

Pilot House

- Access doors/hatches to storage areas
- Aft Bulkhead with powered full width retractable glass
- Actuated sliding sunroof with shade

PRELIMINARY

- Black acrylic helm panel for flush mount electronics installation
- Compass, flush mounted at helm, lighted
- Elevated forward -facing bench seat with storage, aft
- Flush mounted cup holders on helm (4)
- Forward helm seating module with Costa bench seat
- Locking entry door to lower accommodations located at helm
- Non -skid surface to prevent slipping
- Pilot house top, fiberglass w/ integrated supports, two-tone coloring
- Power actuated sliding side access doors port and starboard. Allows for open air access or enclosed area while operating vessel
- Procurve solid curved glass for pilot house windshield and sides
- Recessed fiberglass footrest
- USB/USB-C charging outlets and 12V plug inside cabin and at helm

Galley

- 110/12V USB/USB-C outlets

- Air conditioning, direct expansion, single zone
- Dimmers, LED interior lighting
- Dinette seating
- Electric 2 burner, Invisacook Induction, undermounted
- Flooring, synthetic teak
- Galley countertop, Quartz with stainless steel sink
- Microwave located in upper galley cabinet
- Molded access stairs with teak treads for helm area
- Portlight, port side, non-opening
- Refrigerator/freezer
- Shades
- Trash bin
- TV, flat screen
- Walnut, natural wood, high-gloss

Forward Stateroom (MSR)

- 110/12V USB/USB-C outlets
- Bedrails, wrapped
- Hanging lockers, (2) white -oak lined
- Headliner, Majilite, 1/8" foam & tricot backing, throughout
- Island queen bed, walk-around with lift up storage below
- Lighting, 24V, recessed in soffit and headliner

- Mattress, Slumber 6 1/2" Low coil with Velcro
- Portlight, port and forward hull side
- Reading lights at head of bed
- Stereo speakers
- Walnut, natural wood, high-gloss

Aft Stateroom

- 110/12V USB/USB-C outlets
- Bedrails, wrapped
- Island queen bed , athwartship with lift up storage below
- End tables, (2)
- Hanging locker above forward end table
- Lighting, 24V, recessed in soffit and headliner
- Headliner, Majilite, 1/8" foam & tricot backing, throughout
- Mattress, handcraft, 5" Ultra Poly Foam
- Portlight, port and starboard hull side
- Stereo speakers

Forward (MSR) and Guest Head

- Countertop and sink, solid Surface
- Flooring, Amtico vinyl
- Freshwater electric head with holding tank and overboard discharge
- Heads compartment

- enclosed with molded-in vanity with freshwater sink and faucet, toilet, exhaust fan
- Lighting, 24V, recessed in soffit and headliner
- Lower vanity with storage
- Receptacle, 120V, GFCI protected
- Shower light
- Stall shower, fiberglass with polished chrome fixtures and drain to automatic sump pump in bilge
- Towel bars and rings, polished chrome
- Upper medicine cabinet with mirrored doors and storage

Aft Deck

- Access hatches in-deck to access machinery space and optional Seakeeper
- Actuated aft bulkhead window
- Aft garage style storage with large access hatch and access to dockside electrical and water connections
- Durable white outdoor upholstery for lounge, bench seating and coaming bolsters
- Freshwater wash down spigot located in anchor locker

PRELIMINARY

- Electric grill in aft deck Summer Kitchen
- Heavy duty gasketing for all hatches with installation detail molded in for tight seal
- L-shaped Summer Kitchen located on aft bulkhead with rear entrance salon door
- Powder-coated aluminum coiled hose holder mounted under gunwale
- Stainless 10" pop-up cleat aft in cockpit.
- Stainless steel gas pistons on deck hatches
- U-Shaped aft lounge with fixed table

Forward Deck

- Anchor locker
- Bow rail, polished aluminum, low profile
- Forward wrap-around lounge seating integrated into bow with (4) Gemlux cup holders
- Freshwater wash down spigot in anchor locker
- Stainless 10" pop-up spring and forward cleats.
- Sun pads located on forward deck

Delivery

- Transom mounted Garelick retractable ladder



PRELIMINARY



OPTIONAL EQUIPMENT

ENGINE OPTIONS

- ☐ Quad Mercury V12 600 cold fusion white w/Mercury Joystick

PILOT HOUSE

- ☐ Radar mast for electronics, navigation
- ☐ Forward helm seating module with (3) helm chairs
- ☐ Intermittent wiper for pilot house windshield
- ☐ Aft extending sunshade to cover aft deck and seating area

LAYOUT

- ☐ Forward crossover
- ☐ Single stateroom layout
- ☐ Aft stateroom, side by side

AFT DECK

- ☐ Wrap around outside kitchen window with grill, undermount sink, refrigeration and countertop area located on aft pilot house bulkhead (includes power window w/full width retractable glass)
- ☐ Freshwater hot and cold shower wash down located in gunwale
- ☐ Drop down TV located on hardtop underside for aft deck viewing

OPTIONAL AFT DECK SEATING

- ☐ Booth style seating, w/fixed table and interchangeable direction on forward bench seat
- ☐ U-Shaped Summer Kitchen located on aft bulkhead
- ☐ Summer Kitchen with (3) barstools located on aft bulkhead

GELCOAT AND PAINT

- ☐ Boot stripe, paint

- ☐ Bottom paint
- ☐ Hull color, gelcoat, light color (KG, SB, BB)
- ☐ Hull color, gelcoat, two-tone at chine, light color
- ☐ Hull color, gelcoat, dark color (VG, NG, FB, SS, SG)
- ☐ Hull color, gelcoat, two-tone at chine, dark color
- ☐ Hull color, paint
- ☐ Topside gelcoat, all topsides including deck liner and deck boxes (specify color)
- ☐ Custom outboard paint package

UPHOLSTERY/EXTERIOR

- ☐ Costa Marine cover package to include aft seat, fwd lounge (white/grey/toast/black)
- ☐ Costa Marine, engine covers (white/grey/toast/black)
- ☐ Costa Marine sunshade, fwd w/carbon fiber poles
- ☐ Costa Marine sunshade, fwd w/stainless poles
- ☐ Diamond/Bentley stitching
- ☐ Diamond/Bentley stitching, double
- ☐ Upgraded upholstery for seating and coaming with optional colors

DECOR

- ☐ Interior décor, Grey/Toast/Navy (must select color scheme)
- ☐ Interior, custom décor (req. meeting w/Interior Designer)

ENHANCEMENTS AND CONVENIENCE

- ☐ Arid dry bilge system (3 zones)
- ☐ Bow thruster, proportional
- ☐ Electrosea CLEARLINE
- ☐ Engine flush system, Reverso automatic
- ☐ Forward anchor locker with shelf and through stem anchor and roller assembly and windlass, painted awlgrip

V-55 SY

SPECIFICATION HIGHLIGHTS

- ☐ Interior wood, light grey veneer
- ☐ Interior wood, dark grey veneer
- ☐ Seakeeper 10.5
- ☐ Underwater lights (4)
- ☐ Transom name done by outside vendor
- ☐ Water delivery kit w/out anchor
- ☐ Water delivery kit
- ☐ Watermaker, 170 GPD

ELECTRONIC PACKAGES

- ☐ Garmin package, factory installed
(includes 2kW transducer)
- ☐ Simrad package, factory installed
(includes 2kW transducer)
- ☐ Upgraded 3kW transducer for factory installed
Garmin/Simrad package
- ☐ Entertainment package
- ☐ Entertainment package, custom
- ☐ Navigation package, custom
(see AME order for details)

*Nautic Alert V Tracker Satellite tracking system req. for all Florida boats;
select from AME order form



For the most up to date
information on the new
V-55 Sport, scan this
QR Code.

Length, hull

55' 7" (16.9 meters)

Beam, overall (B.O.A.)

15' 6" (4.7 meters)

Draft

engines up, full load

37" (.9 meters)

engines down, full load

48" (1.2 meters)

Weight

half load

47,500 pounds (21,546 kilograms)

full load

51,750 pounds (23,473 kilograms)

(1) Weight with QUAD 600 engines

(2) Half Load, 50% liquids
Full Load, 100% liquids
no passengers or gear
hardtop, no tower

Deadrise (at transom)

22.5°

Fuel capacity*

1,100 gallons (4,164 liters)

Water capacity

150 gallons (568 liters)

Holding tank capacity

50 gallons (189 liters)

Max engine HP

2,400 hp

Diesel Fuel

60 gallons (227 liters)

*EPA-required fuel system components,
temperature, boat loading and other
factors will affect the usable fuel
capacity by an estimated 10 percent.



Please contact Valhalla Boatworks for more information about any of these models.

Phone: 609.296.6000 • Fax: 609.296.3956
valhallaboatworks.com

ONE YEAR LIMITED WARRANTY

Valhalla Boatworks provides a 12 month limited warranty to the original purchaser. Certain restrictions apply. Ask your dealer for a copy.

The right is reserved to make changes, without notice, at any time, in equipment, materials, prices and specifications. Accommodation drawings and photos may show optional equipment. Performance may vary depending upon conditions.